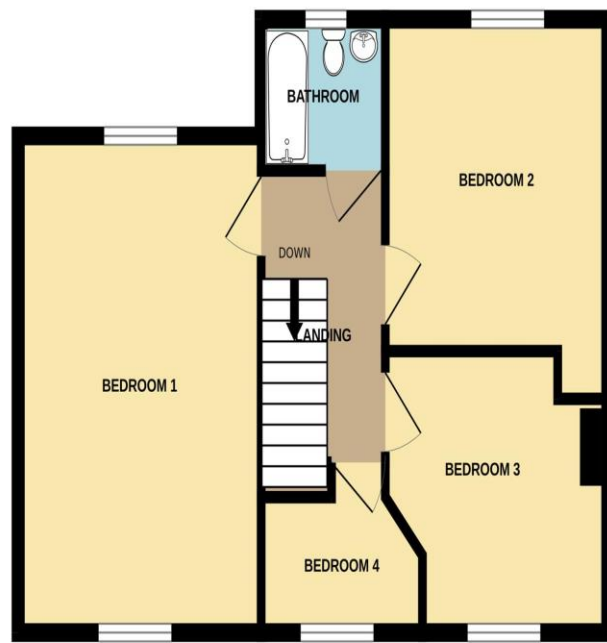
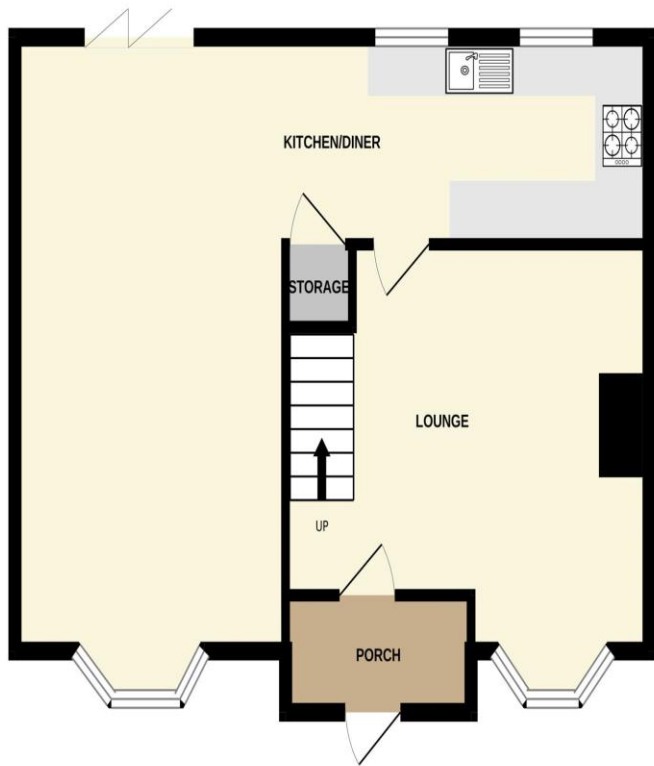




GROUND FLOOR

1ST FLOOR



Whilst every attempt has been made to ensure the accuracy of the floorplan contained here, measurements of doors, windows, rooms and any other items are approximate and no responsibility is taken for any error, omission or mis-statement. This plan is for illustrative purposes only and should be used as such by any prospective purchaser. The services, systems and appliances shown have not been tested and no guarantee as to their operability or efficiency can be given.
Made with Metropix ©2024

28 Winterslow Drive

Havant PO9 5DX

Price: £350,000

DESCRIPTION

This deceptively spacious and appealing FOUR bedroom end of terraced property is located in Leigh Park in Havant. Internally the property has a light and airy feel and downstairs consists of a generous sized dual aspect lounge with bi-fold doors opening out into the garden. There is also a modern fitted kitchen and separate dining room with feature bay window. Upstairs you will find four bedrooms ideal for a growing family and a modern bathroom suite. Outside in your low maintenance rear garden there is plenty of potential due to wrapping around the house. Additional benefits come in the form of ample off road parking and the property is offered with a complete onward chain.

ACCOMMODATION

PORCH

LOUNGE: 14' 8" x 16' 5" (4.47m x 5.00m)

KITCHEN: 6' 6" x 28' 8" (1.98m x 8.73m)

DINING AREA: 19' 3" x 11' 1" (5.86m x 3.38m)

FIRST FLOOR LANDING

BEDROOM 1: 15' 8" x 11' 0" (4.77m x 3.35m)

BEDROOM 2: 10' 1" x 10' 6" (3.07m x 3.20m)

BEDROOM 3: 9' 7" x 8' 3" (2.92m x 2.51m)

BEDROOM 4: 7' 5" x 4' 1" (2.26m x 1.24m)



BATHROOM: 5' 6" x 4' 8" (1.68m x 1.42m)

OUTSIDE

REAR GARDEN

OFF ROAD PARKING

